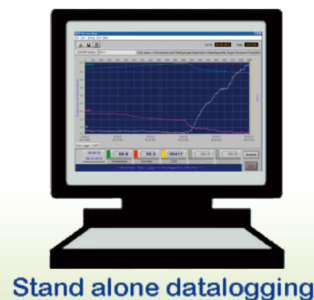
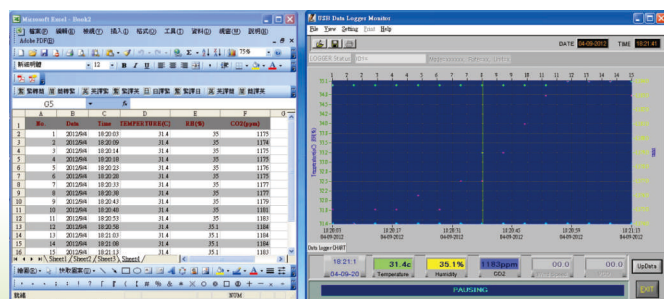


# MINI USB DATALOGGER TEMP.RH SERIES



Spec./ Model no.	98580	98581
Record data	Temperature	
LCD display	YES ( 985805 No display)	YES ( 985815 No display)
Sample interval	From 1 second up to 6 hours	
Temp.range	-40.0~85.0 °C (-40~185 °F)	
Accuracy	±0.6°C (-20~50 °C), others ±1.2°C	
Memory capacity- Total	16000	32000
Operating Temp.RH%	0~50 °C (32~122 °F), <80%RH	
Logger size	135.7 x 28.5 (with cap ) mm	

## FEATURES :

- Design patented mini USB Temp.RH% datalogger with smart and modern shape
- Cost effective without additional costly logger cradle or logger interface device
- Dew point, Wet bulb temperature recording models (98582DW,98583DW) are available. Special key start design prevent easy-touch button starting or stopping recording.
- Bright LED (Green and Red) stands for logging or data exceeds threshold setting
- Visible LCD models :Easy to check the readings in time and any time
- Two color trim looks modern and smart
- When battery is weak, plug USB cable with PC for keeping recording
- Tripod receptacle and strip hole design for long time logging purposes
- Easy plug the logger onto PC to set up and upload stored data
- Record parameters are selectable (Temperature / RH% , both or either )
- Memory point is selectable from 1,000 points up to 32,000 points
- Five ( 5 ) start to record modes:
  - 1.) Schedule
  - 2.) Immediate
  - 3.) Key start
  - 4.) Real time (Up to 64,000 points)
  - 5.) Rollover
- User friendly datalogger software performs more function than any other logger software in the market
- **New models 98582DW,98583DW feature dew point,wet bulb Temp. recording,too.**



## Supplied with :

Logger x1, Battery 1/2AA x1 , Manual x1 , CD x1 (Software), Sensor protective cap x1 ,Clear USB cap x 1 , Wrist strip x 1

	98582	98583
LCD display	YES (985825 No display)	YES (985835 No display)
Sample interval	From 1 second to 6 hours	
Temp.range	-40.0~85.0 °C	
Resolution	0.1°C/0.1°F	
Accuracy	±0.6°C (-20~50 °C), others ±1.2°C	
RH % range	0.1%RH~99.9%RH	
Resolution	0.1%RH	
accuracy	±3%RH(at 25 °C, 10~90%RH, others ±5%RH)	
Memory capacity- Total	16000	32000
Power	1/2 AA battery x 1	
Operating Temp. RH	0~50 °C, <80%RH	
Logger size	135.7 x 28.5 (with cap ) mm	